

ETC-SV20

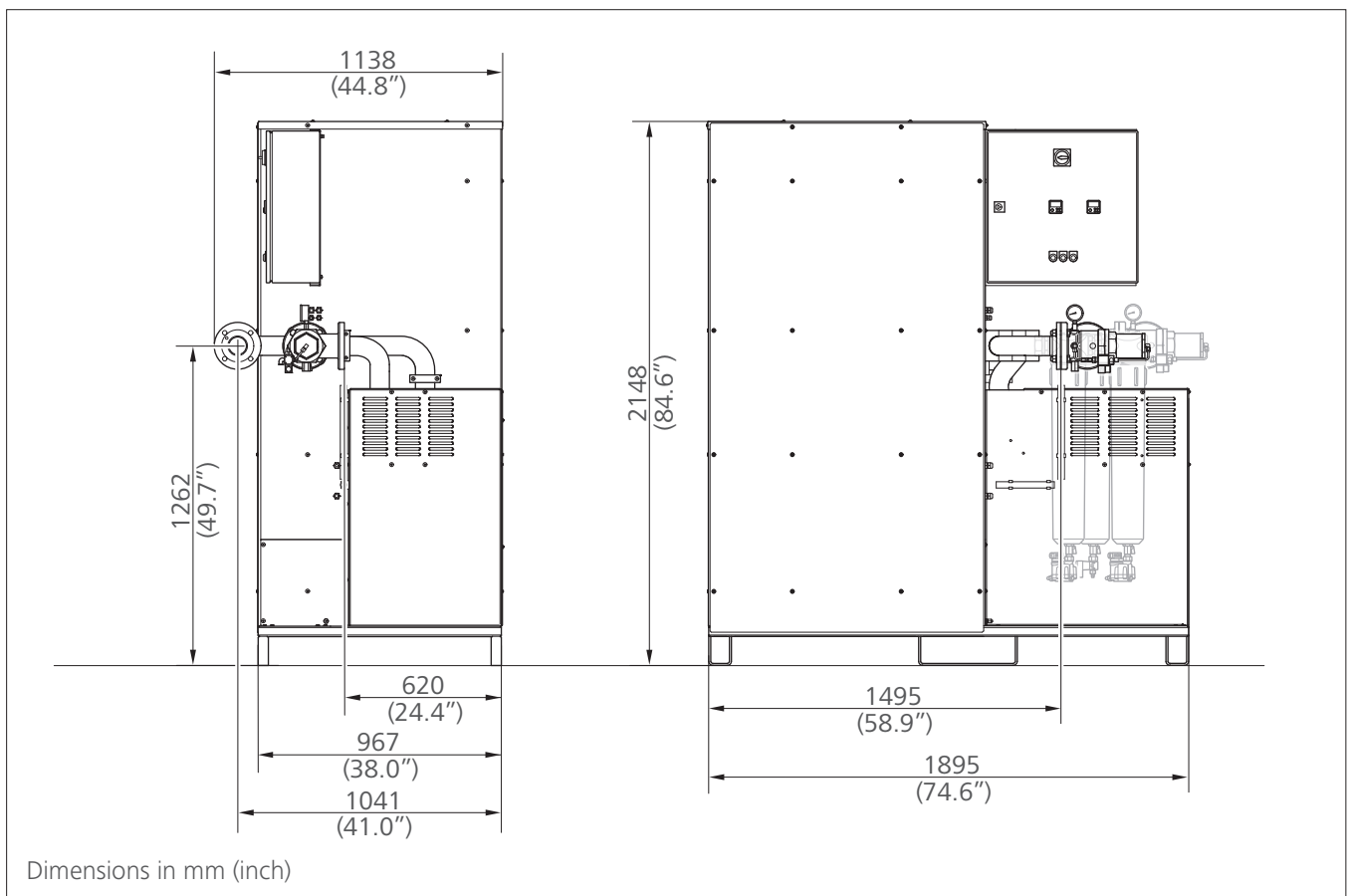
Catalytic air treatment



TECHNICAL SPECIFICATION

› Flow rate at 7 barg / 100 psig	20 Nm ³ /min	706 scfm
› Max. pressure	16 barg	232 psig
› Air quality for oil according to ISO 8573-1	class 0 (< 0.0025 mg/Nm ³)	
› Weight approx.	900 kg	1990 lbs
› Power supply	400 VAC, 3 ph, 50 Hz	
› Installed power	15 kW	
› power consumption	0.005 kWh/Nm ³	

››› Dimensions



Without separator, VS-modul and particle filter.
For detailed layout, please order the installation drawing/3d model.



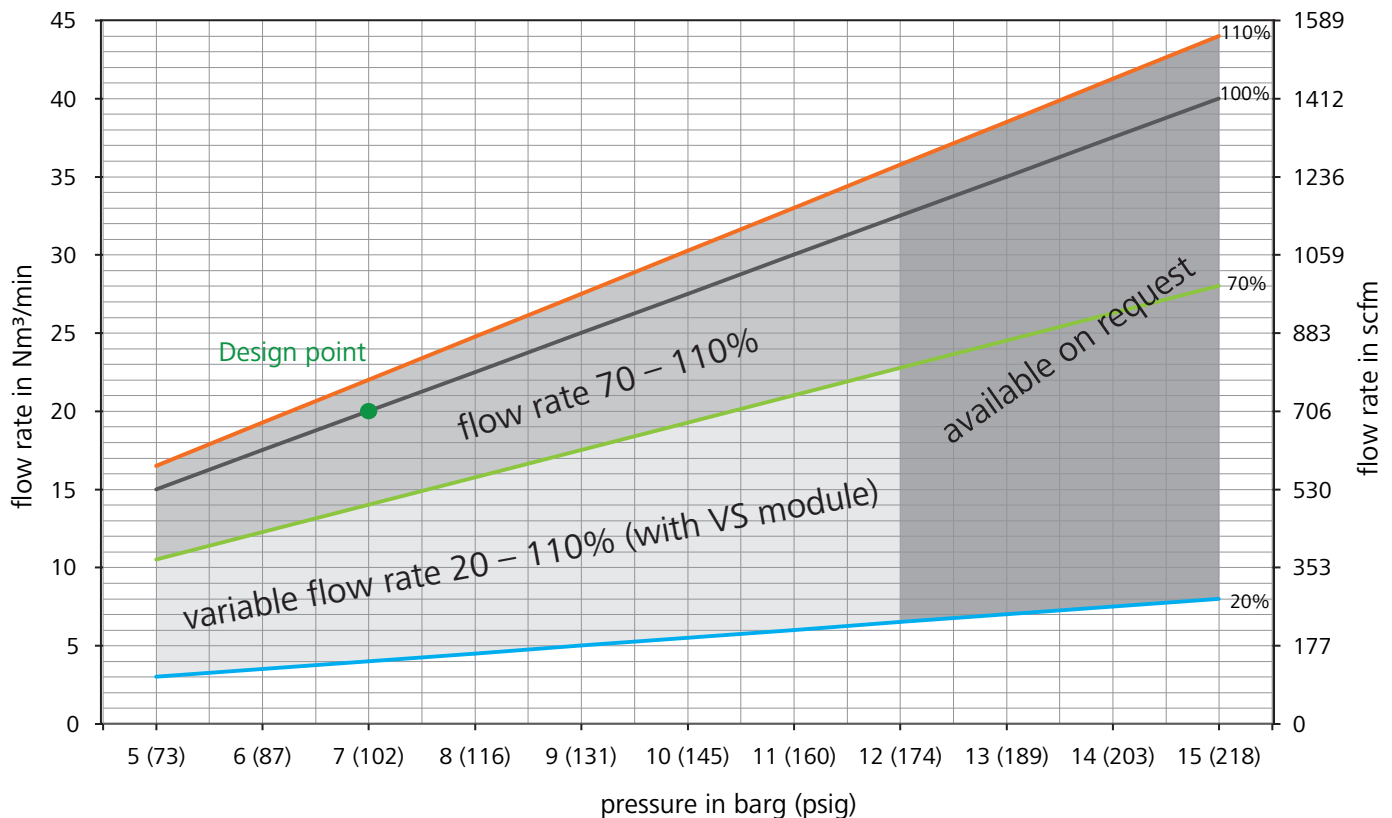
Design data

Permissible deviations from the design data for guaranteed oil-free air class 0 according to DIN ISO 8573-1

	Operating pressure		Nominal flow rate* 100%		Flow rate range without VS module* 70% – 110%		Flow rate range with VS module* 20% – 110%	
	[barg]	[psig]	[Nm ³ /min]	[scfm]	[Nm ³ /min]	[scfm]	[Nm ³ /min]	[scfm]
	5	72.5	15.0	530	10.5 - 16.5	371 - 583	3.0 - 16.5	106 - 583
	6	87.0	17.5	618	12.3 - 19.3	433 - 680	3.5 - 19.3	124 - 680
Design point	7	101.5	20.0	706	14.0 - 22.0	494 - 777	4.0 - 22.0	141 - 777
	8	116.0	22.5	794	15.8 - 24.8	556 - 874	4.5 - 24.8	159 - 874
	9	130.5	25.0	883	17.5 - 27.5	618 - 971	5.0 - 27.5	177 - 971
	10	145.0	27.5	971	19.3 - 30.3	680 - 1068	5.5 - 30.3	194 - 1068
	11	159.5	30.0	1059	21.0 - 33.0	741 - 1165	6.0 - 33.0	212 - 1165
	12	174.0	32.5	1148	22.8 - 35.8	803 - 1262	6.5 - 35.8	230 - 1262

* Normal flow rate according to DIN ISO 13431
Pressures greater than 12 barg are available on request

Design chart



Technical modifications and errors excepted!
© 2011 ROTORCOMP®, Germany

www.rotorcomp.de