

ETC-SV2

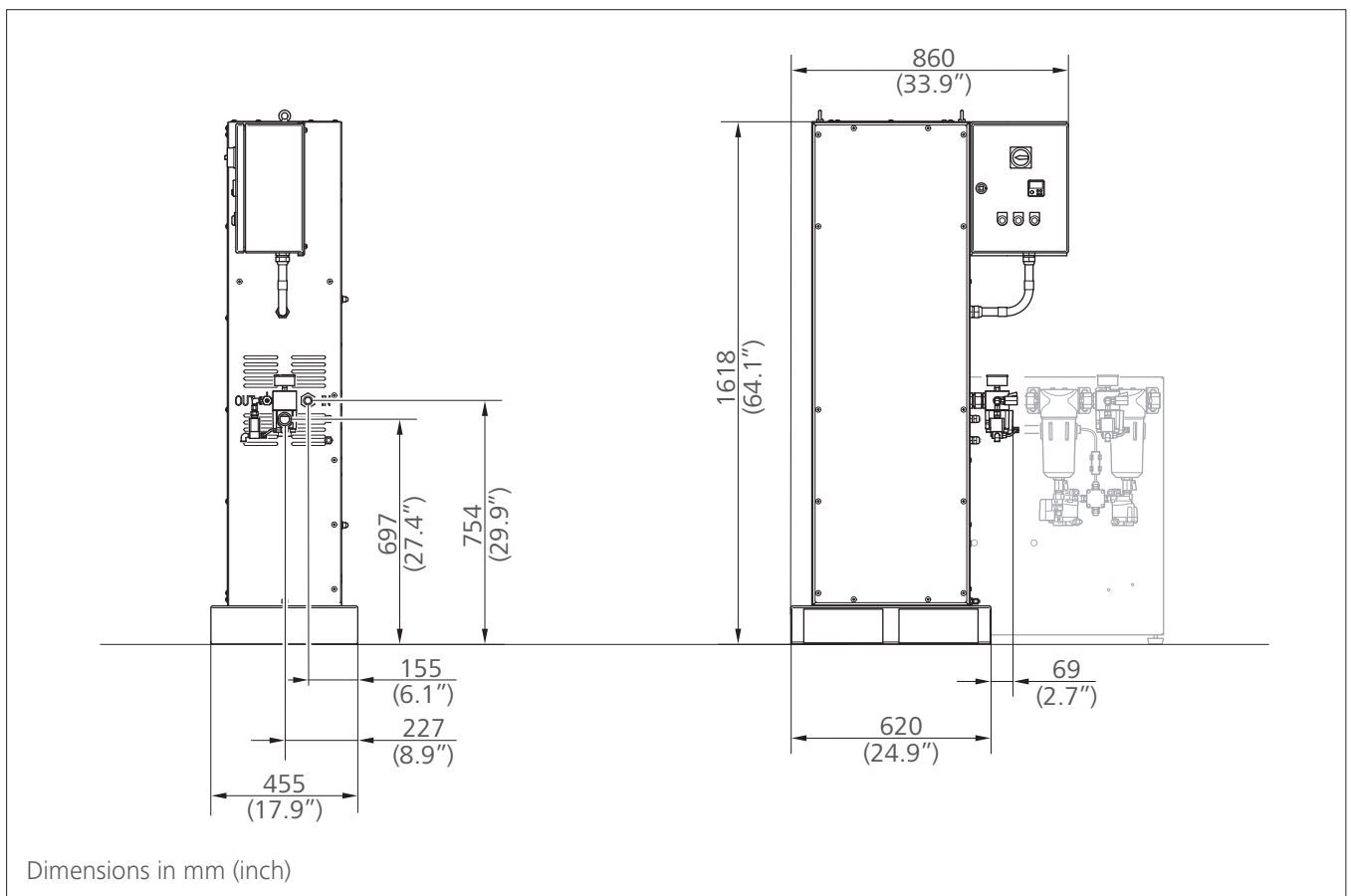
Catalytic air treatment



TECHNICAL SPECIFICATION

› Flow rate at 7 barg / 100 psig	2 Nm ³ /min	71 scfm
› Max. pressure	16 barg	232 psig
› Air quality for oil according to ISO 8573-1	class 0 (< 0.0025 mg/Nm ³)	
› Weight approx.	160 kg	350 lbs
› Power supply	230 VAC, 1 ph, 50 Hz	
› Installed power	2.5 kW	
› power consumption	0.009 kWh/Nm ³	

››› Dimensions



Without separator, VS-modul and particle filter.
For detailed layout, please ask for the installation drawing/3d model.



Design data

Permissible deviations from the design data for guaranteed oil-free air class 0 according to DIN ISO 8573-1

	Operating pressure		Nominal flow rate* 100%		Flow rate range without VS module* 70% – 110%		Flow rate range with VS module* 20% – 110%	
	[barg]	[psig]	[Nm³/min]	[scfm]	[Nm³/min]	[scfm]	[Nm³/min]	[scfm]
	5	72.5	1.50	53	1.05 - 1.65	37 - 58	0.30 - 1.65	11 - 58
	6	87.0	1.75	62	1.23 - 1.93	43 - 68	0.35 - 1.93	12 - 68
Design point	7	101.5	2.00	71	1.40 - 2.20	49 - 78	0.40 - 2.20	14 - 78
	8	116.0	2.25	79	1.58 - 2.48	56 - 87	0.45 - 2.48	16 - 87
	9	130.5	2.50	88	1.75 - 2.75	62 - 97	0.50 - 2.75	18 - 97
	10	145.0	2.75	97	1.93 - 3.03	68 - 107	0.55 - 3.03	19 - 107
	11	159.5	3.00	106	2.10 - 3.30	74 - 117	0.60 - 3.30	21 - 117
	12	174.0	3.25	115	2.28 - 3.58	80 - 126	0.65 - 3.58	23 - 126

* Normal flow rate according to DIN ISO 13431

Pressures greater than 12 barg are available on request

Design chart

