

ETC-SV1

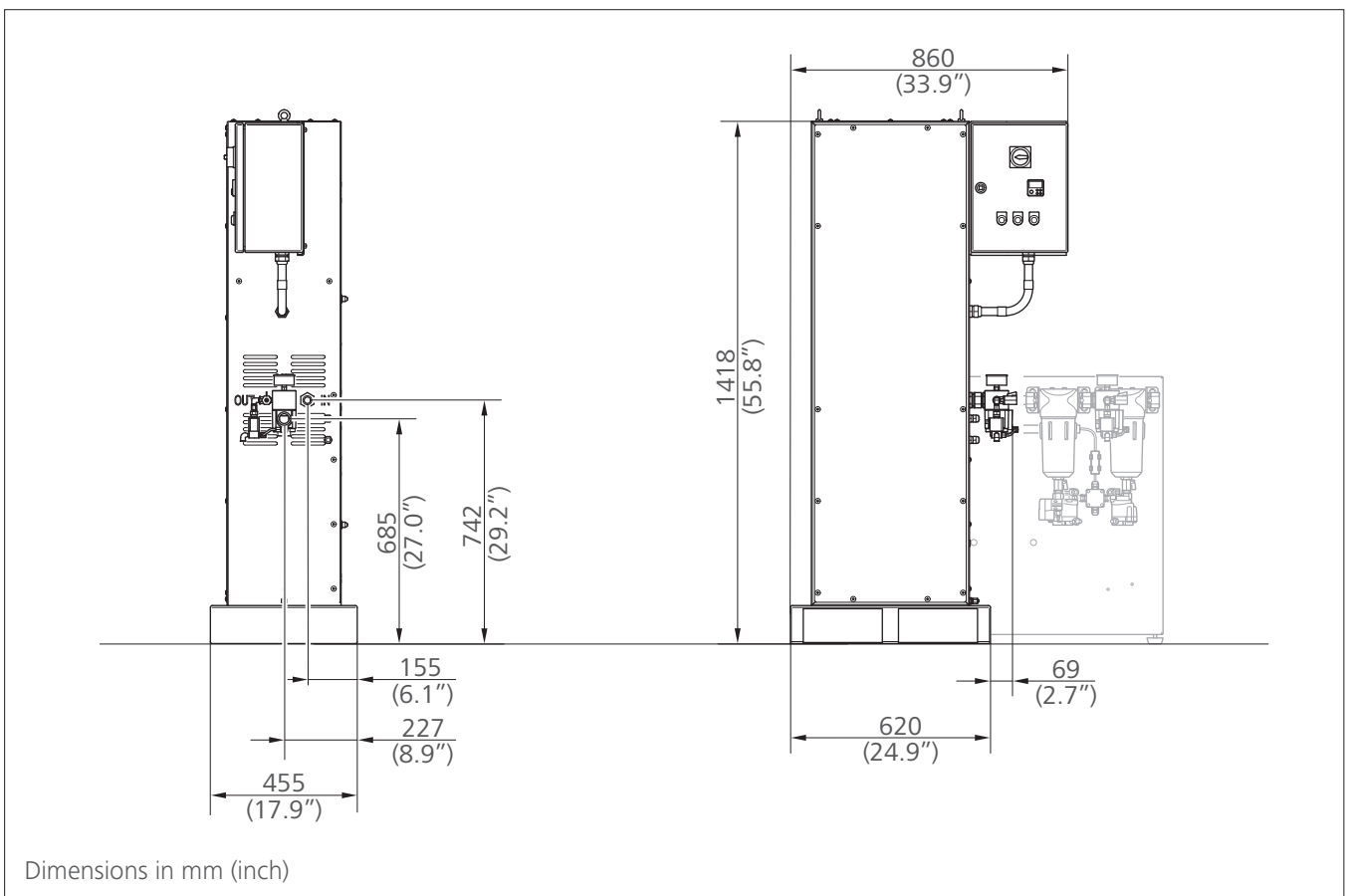
Catalytic air treatment



TECHNICAL SPECIFICATION

› Flow rate at 7 barg / 100 psig	1 Nm ³ /min	35 scfm
› Max. pressure	16 barg	232 psig
› Air quality for oil according to ISO 8573-1	class 0 (< 0.0025 mg/Nm ³)	
› Weight approx.	140 kg	310 lbs
› Power supply	230 VAC, 1 ph, 50 Hz	
› Installed power	1.2 kW	
› power consumption	0.009 kWh/Nm ³	

››› Dimensions



Without separator, VS-modul and particle filter.
For detailed layout, please ask for the installation drawing/3d model.



Design data

Permissible deviations from the design data for guaranteed oil-free air class 0 according to DIN ISO 8573-1

	Operating pressure		Nominal flow rate* 100%		Flow rate range without VS module* 70% – 110%		Flow rate range with VS module* 20% – 110%	
	[barg]	[psig]	[Nm ³ /min]	[scfm]	[Nm ³ /min]	[scfm]	[Nm ³ /min]	[scfm]
	5	72.5	0.75	26	0.53 - 0.83	19 - 29	0.15 - 0.83	5 - 29
	6	87.0	0.88	31	0.61 - 0.96	22 - 34	0.18 - 0.96	6 - 34
Design point	7	101.5	1.00	35	0.70 - 1.10	25 - 39	0.20 - 1.10	7 - 39
	8	116.0	1.13	40	0.79 - 1.24	28 - 44	0.23 - 1.24	8 - 44
	9	130.5	1.25	44	0.88 - 1.38	31 - 49	0.25 - 1.38	9 - 49
	10	145.0	1.38	49	0.96 - 1.51	34 - 53	0.28 - 1.51	10 - 53
	11	159.5	1.50	53	1.05 - 1.65	37 - 58	0.30 - 1.65	11 - 58
	12	174.0	1.63	57	1.14 - 1.79	40 - 63	0.33 - 1.79	11 - 63

* Normal flow rate according to DIN ISO 13431

Pressures greater than 12 barg are available on request

Design chart

