

ETC-MS6

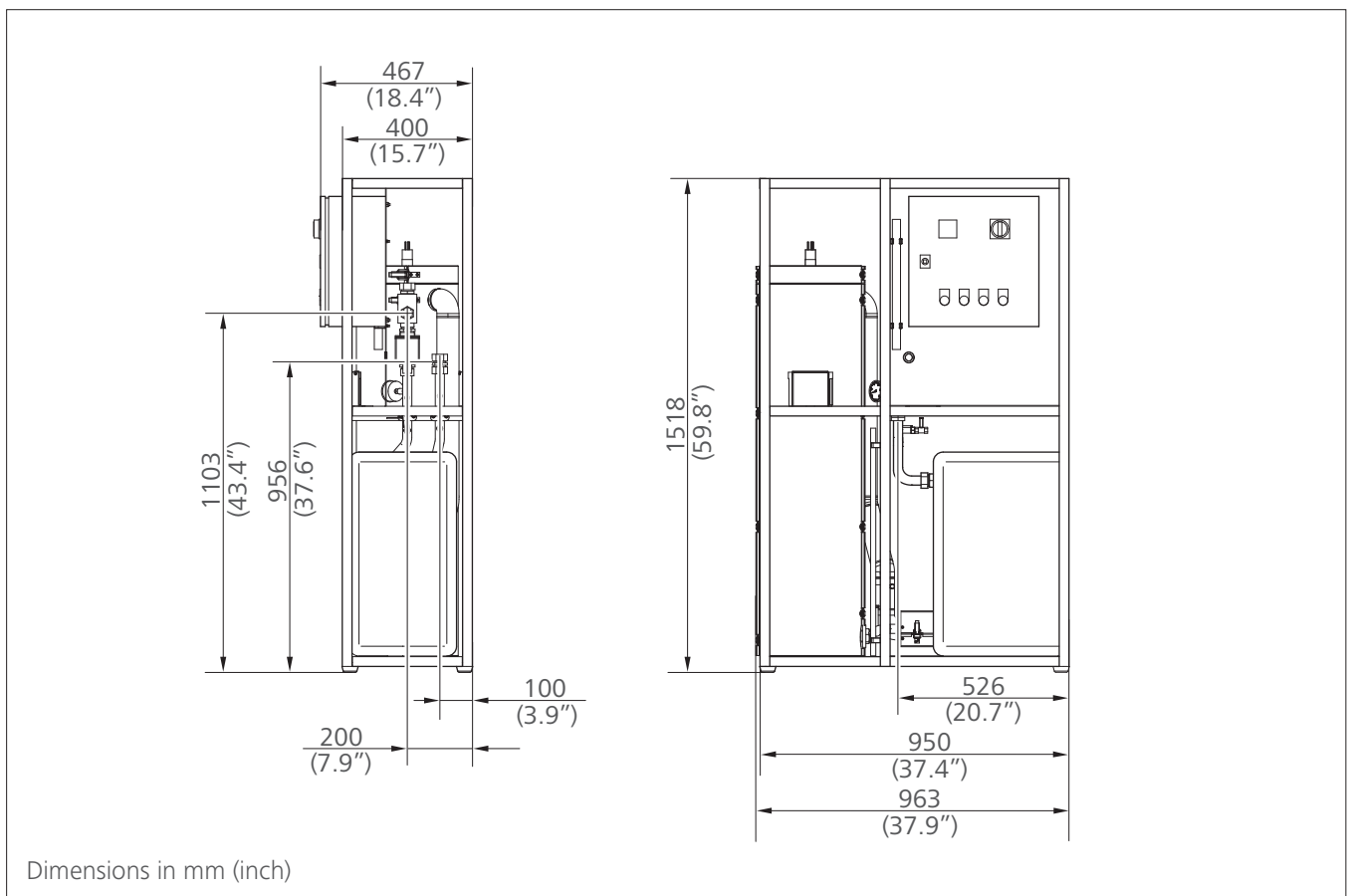
Catalytic air treatment



TECHNICAL SPECIFICATION

› Flow rate at 45 barg / 653 psig	5.8 Nm ³ /min	203 scfm
› Max. pressure	45 barg	653 psig
› Air quality for oil according to ISO 8573-1	class 0 (< 0.0025 mg/Nm ³)	
› Weight approx.	220 kg	485 lbs
› Power supply	230 VAC, 1 ph, 50 Hz	
› Installed power	2 kW	
› power consumption	0.01 kWh/Nm ³	

››› Dimensions



Without separator, VS-modul and particle filter.
 For detailed layout, please ask for the installation drawing/3d model.



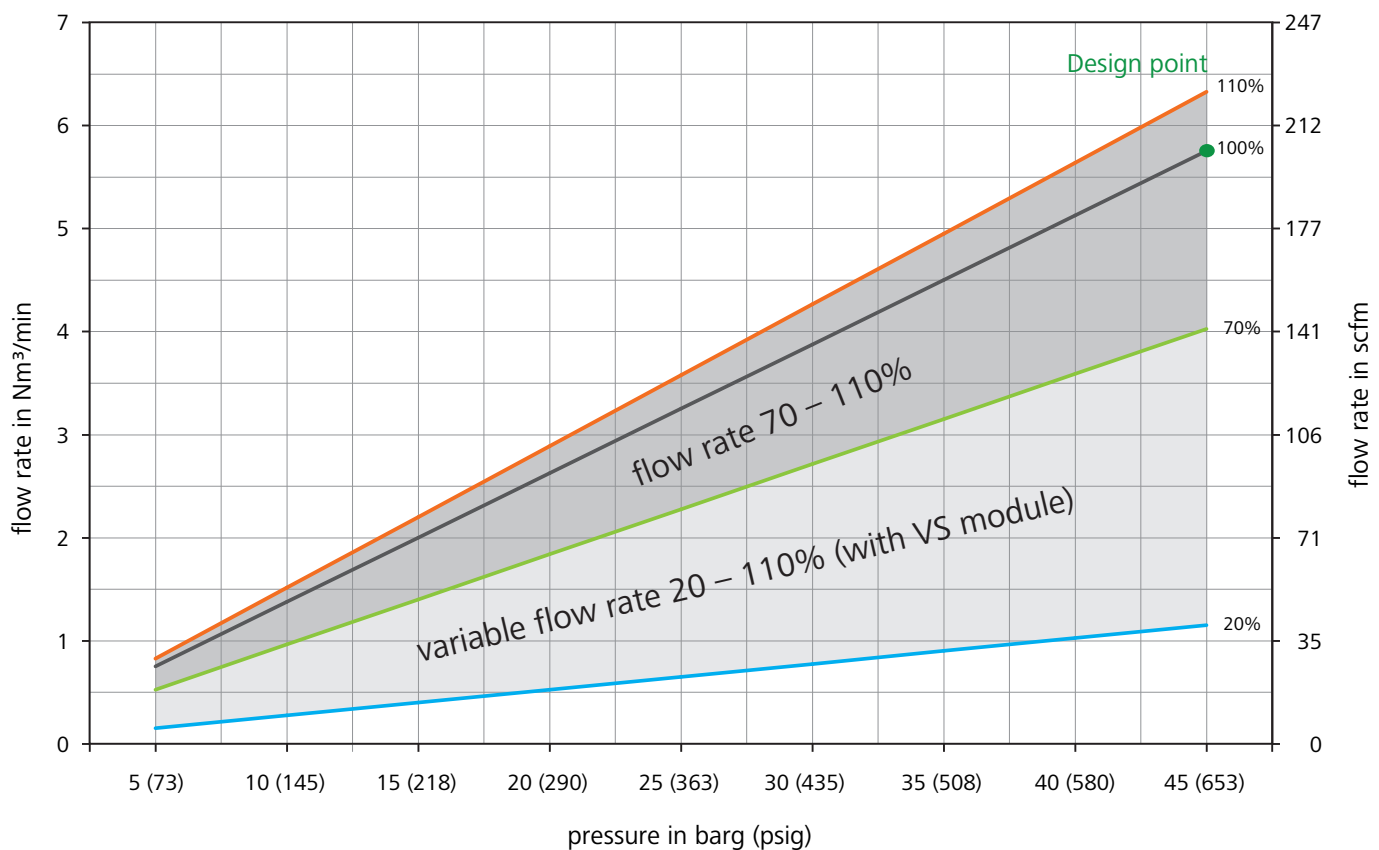
»»» Design data

Permissible deviations from the design data for guaranteed oil-free air class 0 according to DIN ISO 8573-1

	Operating pressure		Nominal flow rate* 100%		Flow rate range without VS module* 70% – 110%		Flow rate range with VS module* 20% – 110%	
	[barg]	[psig]	[Nm ³ /min]	[scfm]	[Nm ³ /min]	[scfm]	[Nm ³ /min]	[scfm]
	5	73	0.8	26	0.5 - 0.8	19 - 29	0.2 - 0.8	5 - 29
	10	145	1.4	49	1.0 - 1.5	34 - 53	0.3 - 1.5	10 - 53
	15	218	2.0	71	1.4 - 2.2	49 - 78	0.4 - 2.2	14 - 78
	20	290	2.6	93	1.8 - 2.9	65 - 102	0.5 - 2.9	19 - 102
	25	363	3.3	115	2.3 - 3.6	80 - 126	0.7 - 3.6	23 - 126
	30	435	3.9	137	2.7 - 4.3	96 - 151	0.8 - 4.3	27 - 151
	35	508	4.5	159	3.2 - 5.0	111 - 175	0.9 - 5.0	32 - 175
	40	580	5.1	181	3.6 - 5.6	127 - 199	1.0 - 5.6	36 - 199
Design point	45	653	5.8	203	4.0 - 6.3	142 - 223	1.2 - 6.3	41 - 223

* Normal flow rate according to DIN ISO 13431

»»» Design chart



Technical modifications and errors excepted!
© 2011 ROTORCOMP®, Germany

www.rotorcomp.de