

# ETC-MS12

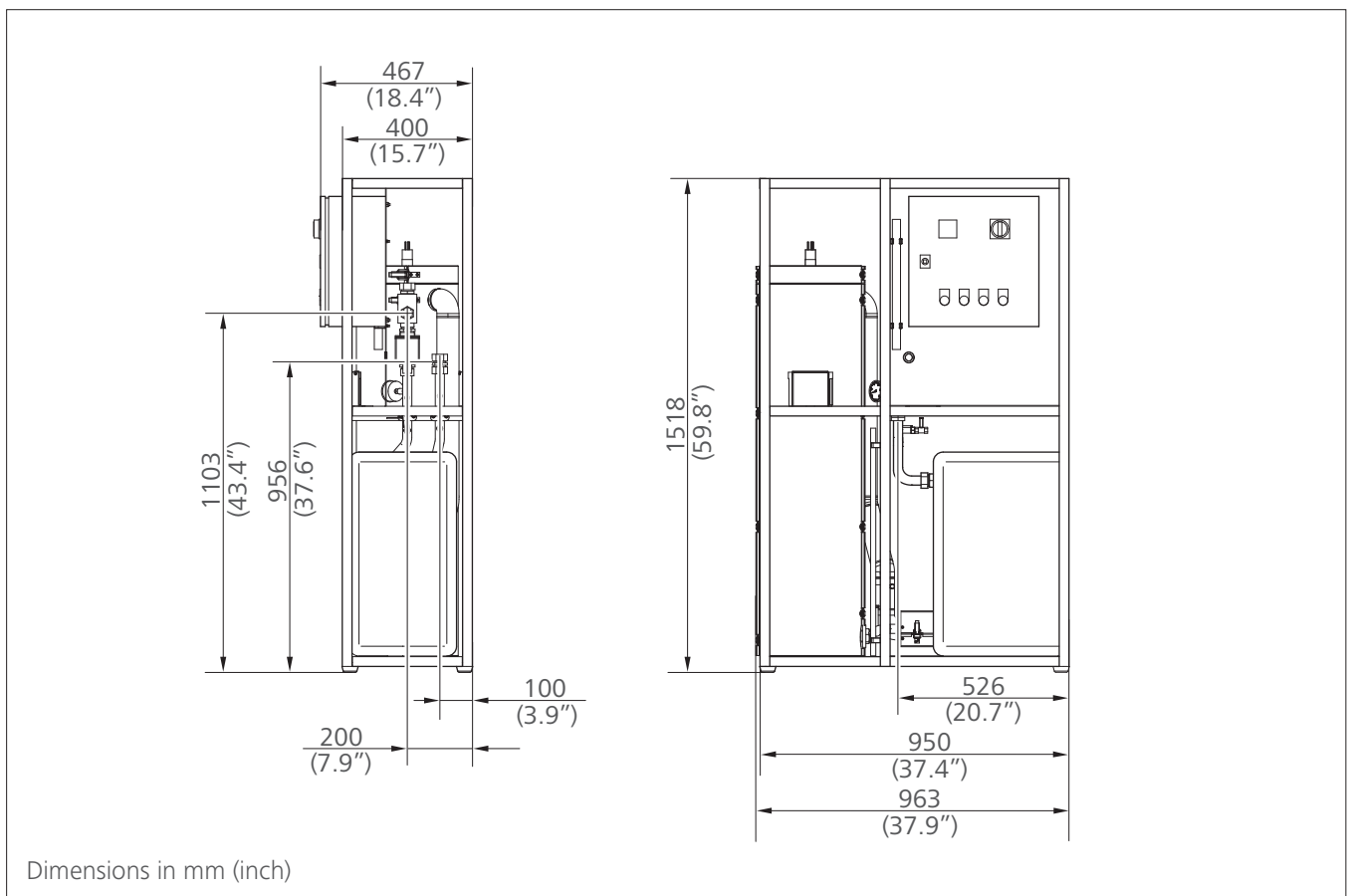
## Catalytic air treatment



### TECHNICAL SPECIFICATION

› Flow rate at 45 barg / 653 psig	11.5 Nm <sup>3</sup> /min	406 scfm
› Max. pressure	45 barg	653 psig
› Air quality for oil according to ISO 8573-1	class 0 (< 0.0025 mg/Nm <sup>3</sup> )	
› Weight approx.	270 kg	600 lbs
› Power supply	400 VAC, 3 ph, 50 Hz	
› Installed power	5 kW	
› power consumption	0.01 kWh/Nm <sup>3</sup>	

### ››› Dimensions



Without separator, VS-modul and particle filter.  
For detailed layout, please ask for the installation drawing/3d model.



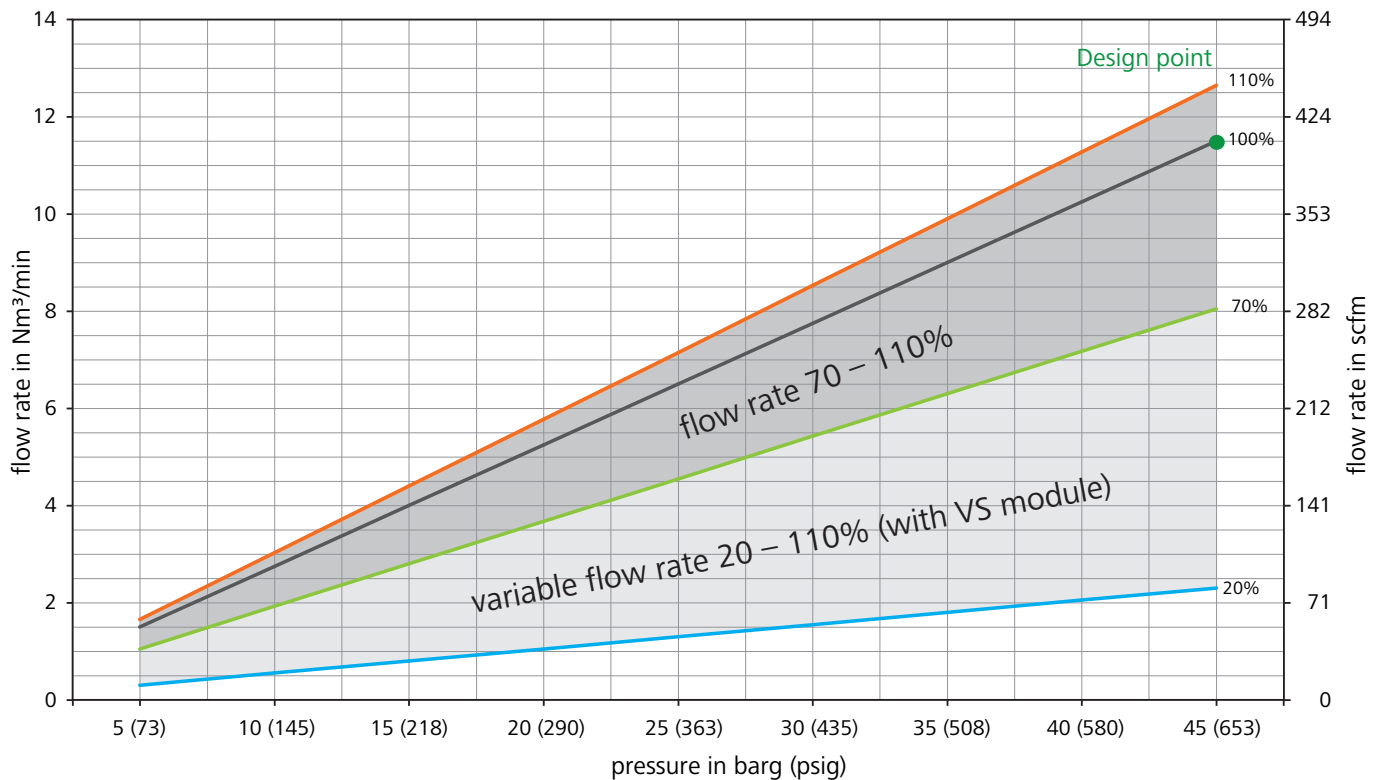
## »»» Design data

Permissible deviations from the design data for guaranteed oil-free air class 0 according to DIN ISO 8573-1

	Operating pressure		Nominal flow rate* 100%		Flow rate range <b>without</b> VS module* 70% – 110%		Flow rate range <b>with</b> VS module* 20% – 110%	
	[barg]	[psig]	[Nm <sup>3</sup> /min]	[scfm]	[Nm <sup>3</sup> /min]	[scfm]	[Nm <sup>3</sup> /min]	[scfm]
	5	73	1.5	53	1.1 - 1.7	37 - 58	0.3 - 1.7	11 - 58
	10	145	2.8	97	1.9 - 3.0	68 - 107	0.6 - 3.0	19 - 107
	15	218	4.0	141	2.8 - 4.4	99 - 155	0.8 - 4.4	28 - 155
	20	290	5.3	185	3.7 - 5.8	130 - 204	1.1 - 5.8	37 - 204
	25	363	6.5	230	4.6 - 7.2	161 - 252	1.3 - 7.2	46 - 252
	30	435	7.8	274	5.4 - 8.5	192 - 301	1.6 - 8.5	55 - 301
	35	508	9.0	318	6.3 - 9.9	222 - 350	1.8 - 9.9	64 - 350
	40	580	10.3	362	7.2 - 11.3	253 - 398	2.1 - 11.3	72 - 398
<b>Design point</b>	45	653	11.5	406	8.1 - 12.7	284 - 447	2.3 - 12.7	81 - 447

\* Normal flow rate according to DIN ISO 13431

## »»» Design chart



Technical modifications and errors excepted!  
© 2011 ROTORCOMP®, Germany

[www.rotorcomp.de](http://www.rotorcomp.de)